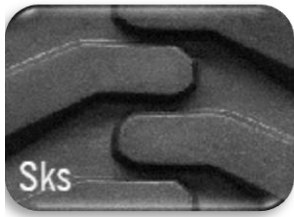
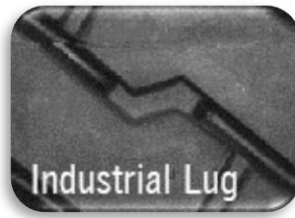


East Bay Tire Price Sheet



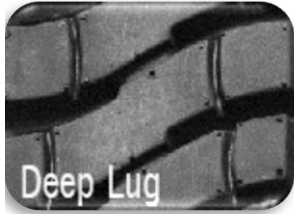
Page 2



Page 2



Page 3



Page 4



Page 5



Page 5



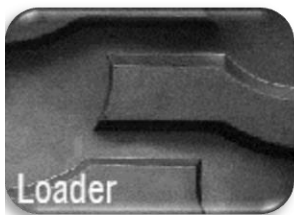
Page 6



Page 6



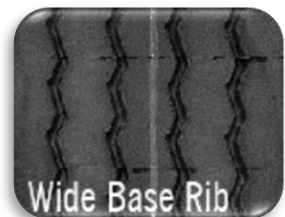
Page 6



Page 6



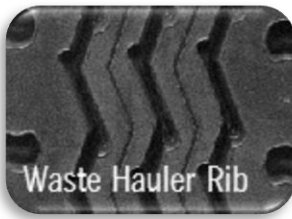
Page 7



Page 7



Page 7



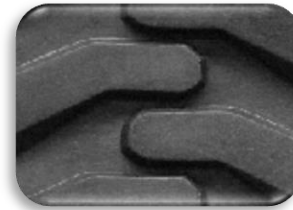
Page 8



Page 9-10

East Bay Tire Price Sheet

Tire Size	Tread #	Pneumatic	Filled	Solid
10.5/80-18	9	178.91	222.23	xxx
10.5-20	9	197.97	245.90	xxx
10-16.5	9	151.74	188.48	207.33
11L-15	9	174.80	217.12	xxx
11L-16	9	176.96	219.81	xxx
12.4-16	10.5	237.93	295.53	xxx
12.5/80-18	10.5	251.12	311.91	xxx
12.5-20	10.5	278.35	345.75	xxx
12-16.5	10.5	210.17	261.05	xxx
14.5/75-16.1	10.5	232.81	289.18	xxx
250-15	9	154.46	191.86	211.05
26-12-12	10.5	160.60	199.48	219.43
27-10.5-15	9	143.55	178.30	196.13
27-10-12	9	135.56	168.39	185.22
27-8.5-15	9	133.81	166.20	182.82
30-10-16	9	xxx	xxx	200.31
31-6-10	9	xxx	xxx	206.99
31-10-20	9	xxx	xxx	218.08
31.5-13-16.5	10.5	208.77	259.31	285.24
33-12-20	10.5	xxx	xxx	283.63
700-12	9	139.02	172.67	189.94
700-15	9	154.46	191.86	211.05
825-15	9	173.77	215.84	237.43



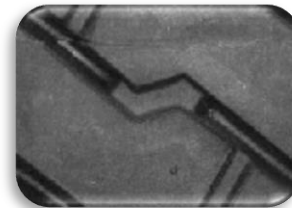
Sks

Tread #	Base Width	Tread Depth
9	8¾"	25/32

10.5	10½"	26/32
------	------	-------

425.445

Tire Size	Tread #	Pneumatic	Filled	Solid
18-7-8	4	76.64	95.20	104.72
21-8-9	6	98.77	122.68	134.95
23-9-10	7	122.11	151.67	166.84
28-9-15	7	151.31	187.94	206.74
570-12	3	89.93	111.71	122.88
600-9	3	85.84	106.62	117.28
650-10	4	101.13	125.61	138.17
650-16	4	127.74	158.67	174.53
700-12	4	114.97	142.80	157.08
700-15	6	141.10	175.26	192.79
750-10	6	122.29	151.89	167.08
750-15	6	145.80	181.10	199.22
750-16	6	156.21	194.03	213.43
825-15	7	179.18	222.56	244.82
825-20	7	201.75	250.59	275.65



Industrial Lug

Tread #	Base Width	Tread Depth
3	5 9/16"	24/32

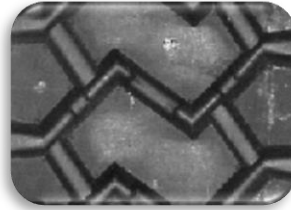
4	6 3/8"	24/32
---	--------	-------

6	7"	24/32
---	----	-------

7	7 5/8"	24/32
---	--------	-------

East Bay Tire Price Sheet

Tire Size	Tread #	Pneumatic	Filled	Solid
1000-20	9	237.50	266.90	293.59
10-16.5	10	238.37	296.09	325.69
1100-20	12	396.48	492.47	541.72
1200-20	12	412.43	512.28	563.51
12-16.5	13	315.25	391.57	430.73
1300-24	13	479.24	595.27	654.80
1400-20	13	452.92	562.57	618.83
1400-24	13	509.34	632.66	695.92
14-17.5	13	354.69	440.56	XXX
15.5-25	16	579.47	719.76	XXX
15-19.5	13	392.62	487.68	536.44
16-22.5	16	497.12	617.47	679.22
17.5-25	16	612.90	761.29	837.42
19.5L-24	16	594.96	739.00	812.90
20.5-25	16	716.18	889.57	978.53
300-15	10	273.14	339.27	373.20
31-10-20	10	XXX	XXX	325.17
33-12-20	12	XXX	XXX	416.06
36-14-20	13	XXX	XXX	488.98
370/75-28	13	496.07	616.17	677.78
400/75-28	16	605.82	752.49	827.74

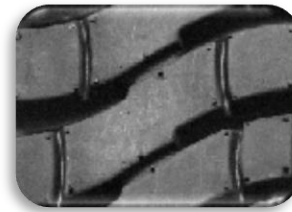


Lug Drive Trac

Tread #	Base Width	Tread Depth
10	9 5/8"	35/32
12	10 3/8"	35/32
13	12 3/4"	36/32
16	15 1/2"	32/32

East Bay Tire Price Sheet

Tire Size	Tread #	Pneumatic	Filled	Solid
1000-20	13	305.00	395.85	435.43
10-16.5	13	218.42	271.30	298.43
1100-20	12	338.37	420.29	462.32
1200-20	15	386.41	479.97	527.96
12-16.5	15	279.00	279.00	279.00
12.5-80-18	15	340.90	423.43	465.77
1300-24	16	556.54	691.28	760.41
1400-24	16	591.49	734.70	808.17
1400-25	16	602.45	748.31	823.14
14-17.5	16	411.90	511.62	562.78
15-19.5	16	480.37	596.67	656.34
15.5-25	16	569.80	707.75	XXX
17.5-25	17	928.92	1153.81	XXX
20.5-25	17	1030.25	1279.68	1407.65
21-8-9	6	101.80	126.44	139.09
23-10-12	9	139.51	173.28	190.61
23-9-10	8	131.12	162.87	179.16
250-15	8	162.34	201.64	221.80
27-10-12	9	154.80	192.27	211.50
27-8.5-15	7	146.34	181.77	199.95
28-12.50-15	15	251.92	312.91	344.20
28-9-15	8	154.22	191.56	210.71
30-10-16	8	171.03	212.44	233.68
300-15	15	303.83	377.39	415.13
31-6-10	13	XXX	XXX	313.92
31-10-20	13	XXX	XXX	313.92
33-6-11	15	XXX	XXX	405.66
33-12-20	15	XXX	XXX	279.00
33x15.5x16.5	16	380.97	473.21	520.53
355-65-15	15	290.34	360.64	396.70
570-12	6	109.14	135.56	149.12
600-9	6	104.17	129.38	142.32
650-10	6	112.45	139.68	153.64
700-12	6	127.84	158.79	174.67
700-15	6	142.04	176.43	194.08
750-15	7	157.26	195.34	214.87
750-16	6	164.62	204.47	224.92
825-15	8	168.00	226.84	249.53
825-20	8	205.62	255.41	280.95
900-20	9	228.79	284.18	312.60



Deep Lug

Tread #	Base Width	Tread Depth
6	7"	28/32
7	7 5/8"	28/32
8	7 15/16"	28/32
9	8½"	28/32
12	9 ¼"	35/32
13	9 5/8"	32/32
15	11"	32/32
16	12½"	40/32
17	16¾"	40/32

East Bay Tire Price Sheet

Tire Size	Tread #	Pneumatic	Filled	Solid
1000-20	9	199.18	247.40	272.14
1200-20	9	209.60	260.35	286.38
18-7-8	5	65.14	80.91	89.00
200-50-10	6	67.34	83.65	92.01
21-8-9	6	80.44	99.91	109.90
23-10-12	9	115.80	143.84	158.22
23-7.5-12	7	90.97	113.00	124.30
23-9-10	9	106.54	132.33	145.57
24-9-15	9	132.02	163.98	180.37
250-15	9	138.96	172.61	189.87
27-10-12	9	128.54	159.66	175.63
28-9-15	8	121.86	151.36	166.50
400-8	1	35.51	44.11	48.52
500-8	3	50.11	62.24	68.46
570-12	1	48.87	60.70	66.77
600-9	1	46.64	57.93	63.73
650-10	5	82.51	102.49	112.73
700-12	5	93.80	116.51	128.16
700-15	6	112.24	139.41	153.35
750-10	6	97.27	120.83	132.91
750-15	7	121.50	150.92	166.01
750-16	7	127.38	158.22	174.05
825-15	8	144.31	179.25	197.17
825-20	8	162.48	201.82	222.00
900-20	9	189.92	235.90	259.49



Crossbar

Tread #	Base Width	Tread Depth
1	5 1/16"	14/32
5	6 7/16"	17/32
6	7"	18/32
7	7 9/16"	19/32
8	8"	18/32
9	8 5/8"	20/32

Tire Size	Tread #	Pneumatic	Filled	Solid
23-9-10	7	xxx	221.80	243.98
28-9-15	7	xxx	277.50	305.25
600-9	4	xxx	161.14	177.26
650-10	4	xxx	165.12	181.63
700-12	4	xxx	187.71	206.48
750-10	4	xxx	180.76	198.84
750-15	7	xxx	301.84	332.03
825-15	7	xxx	328.62	361.48



Power Trac

Tread #	Base Width	Tread Depth
4	6 3/8"	36/32
7	7 5/8"	36/32

East Bay Tire Price Sheet

Tire Size	Tread #	Pneumatic	Filled	Solid
12.5-80-18	12	302.26	375.44	xxx
1300-24	12	365.01	453.39	xxx
14.5-20	12	335.05	416.17	xxx
14.9-24	12	381.24	473.54	xxx
1400-20	12	363.44	451.43	xxx
1400-24	12	387.94	481.86	xxx
15-19.5	12	315.06	391.34	xxx
15.5-25	12	393.73	489.05	xxx
33-15.5-16.5	12	250.02	310.55	xxx
36-14-20	12	272.58	338.58	xxx



Grader (G-2)

Tread #	Base Width	Tread Depth
12	12"	31/32

Tire Size	Tread #	Pneumatic	Filled	Solid
1300-24	12	368.28	457.44	xxx
14.5-20	12	320.86	398.54	xxx
14.9-24	13	394.69	490.25	xxx
1400-24	13	423.15	525.59	xxx
14-17.5	12	272.57	338.56	xxx
15-19.5	13	326.18	405.15	xxx
15.5-25	13	407.63	506.31	xxx
16.9-24	12	385.68	479.06	xxx
16.9-28	13	448.15	556.65	xxx
33-15.5-16.5	13	258.84	321.51	xxx



Non Directional Grader

Tread #	Base Width	Tread Depth
12	11 15/16"	32/32
13	12 3/4"	32/32

Tire Size	Tread #	Pneumatic	Filled	Solid
14.9-24	18	490.42	609.15	xxx
15.5-25	18	506.49	629.11	xxx
15-625	18	431.00	535.35	xxx
16.5/80-24	18	557.53	692.51	xxx
16.9-24	18	545.83	677.98	xxx
16.9-28	18	586.67	728.71	xxx
17.5/65-20	18	441.26	548.09	xxx
17.5-25	18	535.71	665.40	xxx



Backhoe

Tread #	Base Width	Tread Depth
18	14 5/8"	35/32

Tire Size	Tread #	Pneumatic	Filled	Solid
16.9-24	19	479.40	595.47	xxx
16.9-28	19	515.27	640.02	xxx
17.5-25	19	522.27	648.72	xxx
17.5L-24	19	453.44	563.23	xxx
18.4-28	19	560.82	696.60	xxx
19.5L-24	19	481.20	597.71	xxx
20.5-25	19	579.25	719.48	xxx
21L-24	19	505.27	627.60	xxx
400-75-28	19	465.07	577.67	xxx

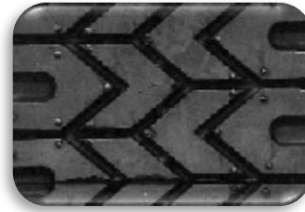


Loader

Tread #	Base Width	Tread Depth
19	16 3/4"	35/32

East Bay Tire Price Sheet

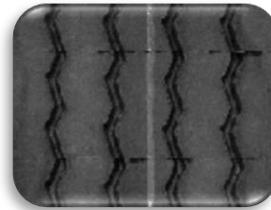
Tire Size	Tread #	Pneumatic	Filled	Solid
40-19-19.5	7 (x2)	277.32	344.46	xxx



SuperGrip

Tread #	Base Width	Tread Depth
7	7 5/16"	17/32

Tire Size	Tread #	Pneumatic	Filled	Solid
33-16-17.5	11	219.99	273.25	xxx
33-16-17.5	13	230.89	286.79	xxx



Wide Base Rib

Tread #	Base Width	Tread Depth
11	11 1/4"	16/32
13	13 1/8"	16/32

Tire Size	Tread #	Pneumatic	Filled	Solid
1100-20	12	306.00	380.09	418.10
1200-20	14	332.09	412.49	453.73
17.5/65-20	14	332.48	412.97	454.27
18-19.5	14	342.38	425.27	467.79
31-15.5-15	14	239.69	297.73	327.50
355-65-15	14	249.52	309.93	340.93
425/65R-22.5	14	342.38	425.27	467.79

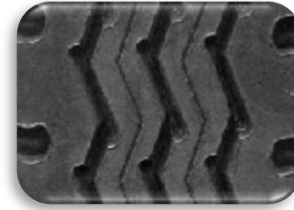


Wide Base Lug

Tread #	Base Width	Tread Depth
12	12 1/8"	21/32
14	13 1/2"	21/32

East Bay Tire Price Sheet

Tire Size	Tread #	Pneumatic	Filled	Solid
1000-20	8	252.12	313.16	344.48
1000-22	8	264.27	328.25	361.08
10-16.5	9	197.49	245.30	XXX
10-17.5	7	157.03	195.04	XXX
10-22.5	8	243.62	302.60	XXX
1100-20	9	276.67	343.65	378.02
1100-22	9	281.76	349.97	384.97
11-17.5	8	220.53	273.92	XXX
11-22.5	8	252.12	313.16	XXX
11-24.5	9	276.67	343.65	XXX
11L-15 SL	10.5	224.40	278.73	XXX
11L-16 SL	10.5	227.17	282.17	XXX
12.5-80-18	11.5	300.13	372.79	XXX
1200-20	11	328.32	407.81	448.59
12-16.5	11.5	251.19	312.00	XXX
12-22.5	9	271.58	337.33	XXX
1300-24	12	397.24	493.41	XXX
14.5-19.5	12	305.42	379.36	XXX
1400-20	12	375.42	466.31	512.94
1400-24	13	450.07	559.04	614.94
14-17.5	12	294.00	365.18	XXX
15.5-25	14	460.43	571.91	XXX
15-19.5	13	346.94	430.93	XXX
15-22.5	13	362.03	449.68	XXX
17.5-25	14	487.00	604.90	XXX
23-8.5-12	7	105.03	130.46	XXX
26-12-12	11.5	191.94	238.41	XXX
26-12-16.5	11.5	195.48	242.80	XXX
27-10-12	8	168.53	209.33	230.26
27-8.5-15	7	123.90	153.90	XXX
29-12.5-15	11.5	218.03	270.82	XXX
31.5-13-16.5	11.5	236.98	294.35	XXX
31-10.5-15	9	197.17	244.90	XXX
31-15.5-15	13	258.89	321.57	XXX
320-80-18	11	281.63	349.82	XXX
33-15.5-16.5	13	275.31	341.97	XXX
380-65-19.5	12	305.42	379.36	XXX
385-65-22.5	13	362.03	449.68	XXX
825-20	7	173.77	215.84	237.42
900-20	8	243.62	302.60	332.86
9-22.5	7	173.77	215.84	237.42



Waste Hauler Rib

Tread #	Base Width	Tread Depth
7	7 11/16"	25/32
8	8"	26/32
9	8 5/8"	26/32
10.5	9 3/8"	25/32
11	10"	26/32
11.5	10 1/2"	26/32
12	11 7/8"	20/32
13	12 3/4"	20/32
14	13 1/4"	20/32

East Bay Tire Price Sheet

Tire Size	BW*	TD**	Pneumatic	Filled	Solid
1000-20	9	3/4	284.68	333.07	370.08
1000-20	9	1	379.57	444.09	493.44
1000-20	10	3/4	316.31	370.08	411.20
1000-20	10	1	421.74	493.44	548.26
10-16.5	10	3/4	228.40	267.23	296.92
10-16.5	10	1	304.54	356.31	395.90
1100-20	10	3/4	319.98	374.38	415.98
1100-20	10	1	426.65	499.17	554.64
1200-20	11	3/4	366.14	428.39	475.99
1200-20	11	1	488.19	571.18	634.65
12-16.5	11	3/4	270.34	316.30	351.44
12-16.5	11	1	360.45	421.73	468.59
12-5-80-18	10	3/4	293.65	343.57	381.74
12-5-80-18	10	1	391.53	458.09	508.99
1300-24	12	3/4	448.33	524.55	582.83
1300-24	12	1	597.77	699.40	777.11
1400-24	12	3/4	476.49	557.49	619.44
1400-24	12	1	635.32	743.32	825.91
1400-25	12	3/4	485.32	567.82	630.91
1400-25	12	1	647.09	757.09	841.21
14-17.5	12	3/4	331.81	388.22	431.36
14-17.5	12	1	442.42	517.63	575.14
15-19.5	12	3/4	367.30	429.74	477.49
15-19.5	12	1	489.73	572.98	636.65
15.5-25	12	3/4	459.01	537.04	596.71
15.5-25	12	1	612.01	716.06	795.62
17.5-25	12	3/4	485.49	568.03	631.14
17.5-25	12	1	647.32	757.37	841.52
20.5-25	16	3/4	717.94	839.99	933.32
20.5-25	16	1	957.25	1119.99	1244.43
21-8-9	8	3/4	126.52	148.03	164.48
21-8-9	8	1	168.70	197.37	219.31
23-10-12	9	3/4	165.51	193.65	215.16
23-10-12	9	1	220.68	258.19	286.88
23-9-10	8	3/4	135.35	158.36	175.95
23-9-10	8	1	180.47	211.15	234.61
250-15	9	3/4	198.61	232.37	258.19
250-15	9	1	264.81	309.83	344.26
27-10-12	9	3/4	183.65	214.87	238.74
27-10-12	9	1	244.86	286.49	318.32
27-8.5-15	8	3/4	161.12	188.52	209.46
27-8.5-15	8	1	214.83	251.35	279.28
28-12.50-15	11	3/4	238.70	279.28	310.31
28-12.50-15	11	1	318.27	372.37	413.75
28-9-15	8	3/4	167.72	196.23	218.03
28-9-15	8	1	223.62	261.64	290.71



Slick

*BW = Base Width **TD = Tread Depth

East Bay Tire Price Sheet

Tire Size	BW	TD	Pneumatic	Filled	Solid
300-15	10	¾	248.41	305.94	339.93
300-15	10	1	331.21	407.92	453.24
31-6-10	10	¾	228.03	280.84	312.05
31-6-10	10	1	304.05	374.46	416.06
31-10-20	10	¾	228.03	280.84	312.05
31-10-20	10	1	304.05	374.46	416.06
33-6-11	11	¾	267.02	328.86	365.40
33-6-11	11	1	356.03	438.48	487.20
33-12-20	11	¾	267.02	328.86	365.40
33-12-20	11	1	356.03	438.48	487.20
33x15.5x16.5	12	¾	291.30	358.75	398.61
33x15.5x16.5	12	1	388.39	478.34	531.49
355-65-15	11	¾	275.11	338.82	376.47
355-65-15	11	1	366.82	451.76	501.96
570-12	7	¾	118.69	146.17	162.42
570-12	7	1	158.25	194.90	216.55
600-9	7	¾	113.28	139.52	155.02
600-9	7	1	151.04	186.02	206.69
650-10	7	¾	122.29	150.61	167.35
650-10	7	1	163.06	200.82	223.13
700-12	7	¾	139.03	171.22	190.25
700-12	7	1	185.37	228.30	253.66
700-15	7	¾	154.47	190.25	211.39
700-15	7	1	205.97	253.66	281.85
750-15	7	¾	159.62	196.59	218.43
750-15	7	1	212.83	262.12	291.24
750-16	7	¾	169.92	209.27	232.53
750-16	7	1	226.56	279.03	310.03
825-15	8	¾	198.61	244.60	271.78
825-15	8	1	264.81	326.14	362.38
825-20	8	¾	223.62	275.41	306.01
825-20	8	1	298.16	367.21	408.01
900-20	9	¾	271.43	334.29	371.44
900-20	9	1	361.91	445.72	495.25



Slick

*BW = Base Width **TD = Tread Depth