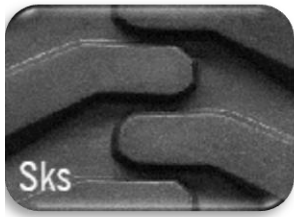
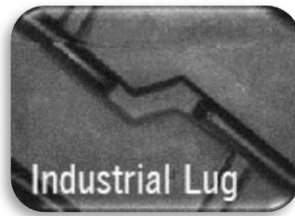


South Price Sheet



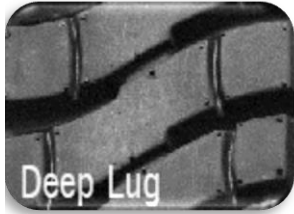
Page 2



Page 2



Page 3



Page 4



Page 5



Page 5



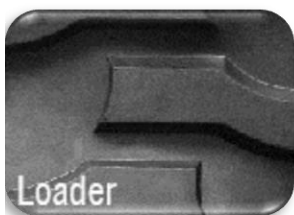
Page 6



Page 6



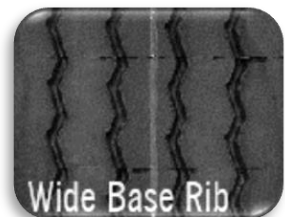
Page 6



Page 6



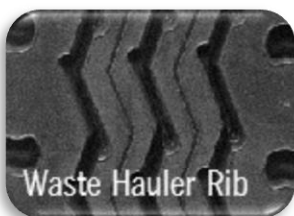
Page 7



Page 7



Page 7



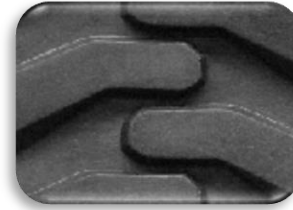
Page 8



Page 9-10

## South Price Sheet

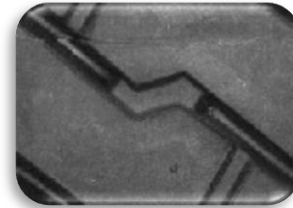
Tire Size	Tread #	Pneumatic	Filled	Solid
10.5/80-18	9	201.38	237.62	xxx
10.5-20	9	222.83	262.94	xxx
10-16.5	9	170.79	201.54	221.69
11L-15	9	196.75	232.16	xxx
11L-16	9	199.18	235.04	xxx
12.4-16	10.5	267.80	316.01	xxx
12.5/80-18	10.5	282.65	333.52	xxx
12.5-20	10.5	313.31	369.70	xxx
12-16.5	10.5	236.55	279.13	xxx
14.5/75-16.1	10.5	262.04	309.21	xxx
250-15	9	173.86	205.15	225.67
26-12-12	10.5	180.76	213.30	234.63
27-10.5-15	9	161.57	190.66	209.72
27-10-12	9	152.59	180.05	198.06
27-8.5-15	9	150.61	177.72	195.49
30-10-16	9	xxx	xxx	214.19
31-6-10	9	xxx	xxx	221.33
31-10-20	9	xxx	xxx	233.19
31.5-13-16.5	10.5	234.98	277.28	305.00
33-12-20	10.5	xxx	xxx	303.28
700-12	9	156.47	184.64	203.10
700-15	9	173.86	205.15	225.67
825-15	9	195.59	230.80	253.88



Sks

Tread #	Base Width	Tread Depth
9	8¾"	25/32
10.5	10½"	26/32

Tire Size	Tread #	Pneumatic	Filled	Solid
18-7-8	4	86.27	101.80	111.98
21-8-9	6	111.17	131.18	144.30
23-9-10	7	137.44	162.18	178.40
28-9-15	7	170.31	200.96	221.06
570-12	3	101.23	119.45	131.39
600-9	3	96.61	114.01	125.41
650-10	4	113.83	134.31	147.74
650-16	4	143.78	169.66	186.63
700-12	4	129.40	152.69	167.96
700-15	6	158.82	187.41	206.15
750-10	6	137.64	162.42	178.66
750-15	6	164.11	193.65	213.02
750-16	6	175.82	207.47	228.22
825-15	7	201.68	237.98	261.78
825-20	7	227.08	267.95	294.75

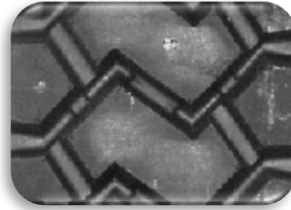


Industrial Lug

Tread #	Base Width	Tread Depth
3	5 9/16"	24/32
4	6 3/8"	24/32
6	7"	24/32
7	7 5/8"	24/32

## South Price Sheet

Tire Size	Tread #	Pneumatic	Filled	Solid
1000-20	10	371.57	438.45	482.29
10-16.5	10	268.31	316.60	348.26
1100-20	12	446.26	526.59	579.25
1200-20	12	464.22	547.77	602.55
12-16.5	13	354.83	418.70	460.57
1300-24	13	539.42	636.51	700.16
1400-20	13	509.79	601.55	661.70
1400-24	13	573.30	676.49	744.14
14-17.5	13	399.23	471.09	XXX
15.5-25	16	652.23	769.63	XXX
15-19.5	13	441.92	521.47	573.61
16-22.5	16	559.54	660.26	726.28
17.5-25	16	689.86	814.03	895.44
19.5L-24	16	669.66	790.20	869.23
20.5-25	16	806.10	951.20	1046.32
300-15	10	307.44	362.78	399.06
31-10-20	10	XXX	XXX	347.70
33-12-20	12	XXX	XXX	444.89
36-14-20	13	XXX	XXX	522.86
370/75-28	13	558.36	658.86	724.75
400/75-28	16	681.89	804.62	885.09

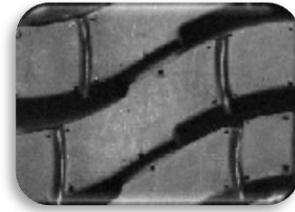


Lug Drive Trac

Tread #	Base Width	Tread Depth
10	9 5/8"	35/32
12	10 3/8"	35/32
13	12 3/4"	36/32
16	15 1/2"	32/32

## South Price Sheet

Tire Size	Tread #	Pneumatic	Filled	Solid
1000-20	13	358.71	423.27	465.60
10-16.5	13	245.85	290.10	319.11
1100-20	12	380.85	449.41	494.35
1200-20	15	434.93	513.22	564.54
12-16.5	15	321.13	378.93	416.83
12.5-80-18	15	383.70	452.77	498.05
1300-24	16	626.42	739.18	813.09
1400-24	16	665.76	785.60	864.16
1400-25	16	678.10	800.15	880.17
14-17.5	16	463.62	547.07	601.78
15-19.5	16	540.69	638.02	701.82
15.5-25	16	641.34	756.79	XXX
17.5-25	17	1045.56	1233.76	XXX
20.5-25	17	1159.62	1368.35	1505.18
21-8-9	6	114.58	135.20	148.72
23-10-12	9	157.02	185.29	203.82
23-9-10	8	147.59	174.16	191.57
250-15	8	182.72	215.61	237.17
27-10-12	9	174.23	205.60	226.16
27-8.5-15	7	164.71	194.36	213.80
28-12.50-15	15	283.55	334.59	368.04
28-9-15	8	173.58	204.83	225.31
30-10-16	8	192.51	227.16	249.87
300-15	15	341.98	403.53	443.89
31-6-10	13	XXX	XXX	335.66
31-10-20	13	XXX	XXX	335.66
33-6-11	15	XXX	XXX	433.77
33-12-20	15	XXX	XXX	433.77
33x15.5x16.5	16	428.81	506.00	556.60
355-65-15	15	326.80	385.62	424.19
570-12	6	122.84	144.95	159.45
600-9	6	117.24	138.35	152.18
650-10	6	126.57	149.35	164.29
700-12	6	143.89	169.79	186.77
700-15	6	159.88	188.66	207.52
750-15	7	177.01	208.87	229.76
750-16	6	185.29	218.64	240.50
825-15	8	205.56	242.56	266.82
825-20	8	231.44	273.10	300.41
900-20	9	257.52	303.87	334.26

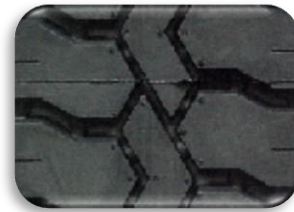


Deep Lug

Tread #	Base Width	Tread Depth
6	7"	28/32
7	7 5/8"	28/32
8	7 15/16"	28/32
9	8½"	28/32
12	9 ¼"	35/32
13	9 5/8"	32/32
15	11"	32/32
16	12½"	40/32
17	16¾"	40/32

## South Price Sheet

Tire Size	Tread #	Pneumatic	Filled	Solid
1000-20	9	224.19	264.55	291.00
1200-20	9	235.92	278.39	306.23
18-7-8	5	73.32	86.52	95.17
200-50-10	6	75.80	89.44	98.39
21-8-9	6	90.54	106.84	117.52
23-10-12	9	130.34	153.81	169.19
23-7.5-12	7	102.39	120.82	132.91
23-9-10	9	119.92	141.50	155.65
24-9-15	9	148.59	175.34	192.87
250-15	9	156.41	184.57	203.02
27-10-12	9	144.68	170.72	187.80
28-9-15	8	137.16	161.85	178.04
400-8	1	39.97	47.17	51.88
500-8	3	56.40	66.55	73.21
570-12	1	55.00	64.90	71.40
600-9	1	52.50	61.95	68.14
650-10	5	92.87	109.59	120.54
700-12	5	105.58	124.58	137.04
700-15	6	126.33	149.07	163.98
750-10	6	109.49	129.20	142.12
750-15	7	136.76	161.38	177.52
750-16	7	143.38	169.19	186.10
825-15	8	162.43	191.67	210.83
825-20	8	182.88	215.80	237.38
900-20	9	213.76	252.24	277.46



Crossbar

Tread #	Base Width	Tread Depth
1	5 1/16"	14/32
5	6 7/16"	17/32
6	7"	18/32
7	7 9/16"	19/32
8	8"	18/32
9	8 5/8"	20/32

Tire Size	Tread #	Pneumatic	Filled	Solid
23-9-10	7	xxx	237.17	260.89
28-9-15	7	xxx	296.73	326.40
600-9	4	xxx	172.31	189.54
650-10	4	xxx	176.56	194.21
700-12	4	xxx	200.72	220.79
750-10	4	xxx	193.28	212.61
750-15	7	xxx	322.75	355.03
825-15	7	xxx	351.39	386.52



Power Trac

Tread #	Base Width	Tread Depth
4	6 3/8"	36/32
7	7 5/8"	36/32

## South Price Sheet

Tire Size	Tread #	Pneumatic	Filled	Solid
12.5-80-18	12	340.22	401.46	xxx
1300-24	12	410.85	484.80	xxx
14.5-20	12	377.12	445.00	xxx
14.9-24	12	429.11	506.35	xxx
1400-20	12	409.08	482.71	xxx
1400-24	12	436.65	515.25	xxx
15-19.5	12	354.62	418.45	xxx
15.5-25	12	443.17	522.94	xxx
33-15.5-16.5	12	281.41	332.07	xxx
36-14-20	12	306.81	362.03	xxx



Grader (G-2)

Tread #	Base Width	Tread Depth
12	12"	31/32

Tire Size	Tread #	Pneumatic	Filled	Solid
1300-24	12	414.52	489.14	xxx
14.5-20	12	361.15	426.15	xxx
14.9-24	13	444.25	524.22	xxx
1400-24	13	476.28	562.01	xxx
14-17.5	12	306.79	362.01	xxx
15-19.5	13	367.14	433.22	xxx
15.5-25	13	458.81	541.39	xxx
16.9-24	12	434.11	512.25	xxx
16.9-28	13	504.43	595.22	xxx
33-15.5-16.5	13	291.34	343.79	xxx



Non Directional Grader

Tread #	Base Width	Tread Depth
12	11 15/16"	32/32
13	12 <sup>3</sup> / <sub>4</sub> "	32/32

Tire Size	Tread #	Pneumatic	Filled	Solid
14.9-24	18	551.99	651.35	xxx
15.5-25	18	570.08	672.70	xxx
15-625	18	485.12	572.44	xxx
16.5/80-24	18	627.54	740.49	xxx
16.9-24	18	614.37	724.95	xxx
16.9-28	18	660.34	779.20	xxx
17.5/65-20	18	496.67	586.07	xxx
17.5-25	18	602.97	711.51	xxx



Backhoe

Tread #	Base Width	Tread Depth
18	14 5/8"	35/32

Tire Size	Tread #	Pneumatic	Filled	Solid
16.9-24	19	539.60	636.72	xxx
16.9-28	19	579.97	684.37	xxx
17.5-25	19	587.85	693.66	xxx
17.5L-24	19	510.38	602.25	xxx
18.4-28	19	631.24	744.87	xxx
19.5L-24	19	541.63	639.12	xxx
20.5-25	19	651.98	769.33	xxx
21L-24	19	568.71	671.08	xxx
400-75-28	19	523.47	617.69	xxx

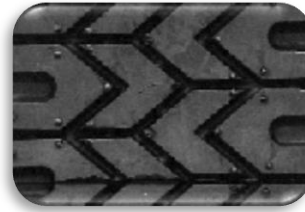


Loader

Tread #	Base Width	Tread Depth
19	16 <sup>3</sup> / <sub>4</sub> "	35/32

## South Price Sheet

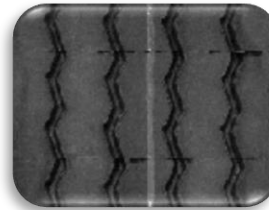
Tire Size	Tread #	Pneumatic	Filled	Solid
40-19-19.5	7 (x2)	312.14	368.33	xxx



SuperGrip

Tread #	Base Width	Tread Depth
7	7 5/16"	17/32

Tire Size	Tread #	Pneumatic	Filled	Solid
33-16-17.5	11	247.61	292.18	xxx
33-16-17.5	13	259.88	306.66	xxx



Wide Base Rib

Tread #	Base Width	Tread Depth
11	11 1/4"	16/32
13	13 1/8"	16/32

Tire Size	Tread #	Pneumatic	Filled	Solid
1100-20	12	344.43	406.42	447.06
1200-20	14	373.78	441.06	485.17
17.5/65-20	14	374.23	441.59	485.75
18-19.5	14	385.37	454.73	500.21
31-15.5-15	14	269.79	318.35	350.19
355-65-15	14	280.85	331.41	364.55
425/65R-22.5	14	385.37	454.73	500.21

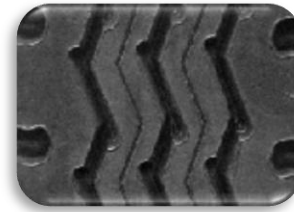


Wide Base Lug

Tread #	Base Width	Tread Depth
12	12 1/8"	21/32
14	13 1/2"	21/32

## South Price Sheet

Tire Size	Tread #	Pneumatic	Filled	Solid
1000-20	8	283.78	334.86	368.34
1000-22	8	297.45	351.00	386.10
10-16.5	9	222.28	262.29	XXX
10-17.5	7	176.74	208.56	XXX
10-22.5	8	274.20	323.56	XXX
1100-20	9	311.41	367.46	404.21
1100-22	9	317.14	374.22	411.64
11-17.5	8	248.22	292.90	XXX
11-22.5	8	283.78	334.86	XXX
11-24.5	9	311.41	367.46	XXX
11L-15 SL	10.5	252.57	298.04	XXX
11L-16 SL	10.5	255.70	301.73	XXX
12.5-80-18	11.5	337.82	398.62	XXX
1200-20	11	369.55	436.07	479.68
12-16.5	11.5	282.73	333.62	XXX
12-22.5	9	305.68	360.71	XXX
1300-24	12	447.11	527.60	XXX
14.5-19.5	12	343.77	405.64	XXX
1400-20	12	422.55	498.61	548.47
1400-24	13	506.59	597.77	657.55
14-17.5	12	330.91	390.48	XXX
15.5-25	14	518.25	611.53	XXX
15-19.5	13	390.50	460.79	XXX
15-22.5	13	407.49	480.83	XXX
17.5-25	14	548.14	646.81	XXX
23-8.5-12	7	118.22	139.50	XXX
26-12-12	11.5	216.04	254.93	XXX
26-12-16.5	11.5	220.02	259.62	XXX
27-10-12	8	189.69	223.83	246.21
27-8.5-15	7	139.46	164.56	XXX
29-12.5-15	11.5	245.41	289.58	XXX
31.5-13-16.5	11.5	266.73	314.74	XXX
31-10.5-15	9	221.92	261.87	XXX
31-15.5-15	13	291.40	343.85	XXX
320-80-18	11	317.00	374.05	XXX
33-15.5-16.5	13	309.88	365.66	XXX
380-65-19.5	12	343.77	405.64	XXX
385-65-22.5	13	407.49	480.83	XXX
825-20	7	195.59	230.79	253.87
900-20	8	274.20	323.56	355.92
9-22.5	7	195.59	230.79	253.87



Waste Hauler Rib

Tread #	Base Width	Tread Depth
7	7 11/16"	25/32
8	8"	26/32
9	8 5/8"	26/32
10.5	9 3/8"	25/32
11	10"	26/32
11.5	10½"	26/32
12	11 7/8"	20/32
13	12¾"	20/32
14	13¼"	20/32



## South Price Sheet

Tire Size	BW*	TD**	Pneumatic	Filled	Solid
1000-20	9	¾	320.42	374.89	416.55
1000-20	9	1	427.23	499.86	555.39
1000-20	10	¾	356.02	416.55	462.83
1000-20	10	1	474.70	555.39	617.11
10-16.5	10	¾	257.08	300.79	334.21
10-16.5	10	1	342.78	401.05	445.61
1100-20	10	¾	360.16	421.39	468.21
1100-20	10	1	480.22	561.85	624.28
1200-20	11	¾	412.12	482.18	535.75
1200-20	11	1	549.49	642.90	714.34
12-16.5	11	¾	304.28	356.01	395.57
12-16.5	11	1	405.71	474.68	527.42
12-5-80-18	10	¾	330.52	386.71	429.68
12-5-80-18	10	1	440.70	515.61	572.90
1300-24	12	¾	504.62	590.41	656.01
1300-24	12	1	672.83	787.21	874.68
1400-24	12	¾	536.32	627.49	697.21
1400-24	12	1	715.09	836.66	929.62
1400-25	12	¾	546.25	639.12	710.13
1400-25	12	1	728.34	852.16	946.84
14-17.5	12	¾	373.48	436.97	485.52
14-17.5	12	1	497.97	582.62	647.36
15-19.5	12	¾	413.42	483.70	537.44
15-19.5	12	1	551.22	644.93	716.59
15.5-25	12	¾	516.65	604.48	671.64
15.5-25	12	1	688.86	805.97	895.52
17.5-25	12	¾	546.45	639.35	710.39
17.5-25	12	1	728.60	852.47	947.19
20.5-25	16	¾	808.09	945.46	1050.51
20.5-25	16	1	1077.45	1260.62	1400.69
21-8-9	8	¾	142.41	166.62	185.13
21-8-9	8	1	189.88	222.16	246.84
23-10-12	9	¾	186.29	217.96	242.18
23-10-12	9	1	248.39	290.61	322.90
23-9-10	8	¾	152.34	178.24	198.05
23-9-10	8	1	203.13	237.66	264.06
250-15	9	¾	223.55	261.55	290.61
250-15	9	1	298.07	348.74	387.48
27-10-12	9	¾	206.71	241.85	268.72
27-10-12	9	1	275.61	322.46	358.29
27-8.5-15	8	¾	181.36	212.19	235.76
27-8.5-15	8	1	241.81	282.92	314.35
28-12.50-15	11	¾	268.67	314.35	349.27
28-12.50-15	11	1	358.23	419.13	465.70
28-9-15	8	¾	188.77	220.87	245.41
28-9-15	8	1	251.70	294.49	327.21



Slick

\*BW = Base Width \*\*TD = Tread Depth

## South Price Sheet

Tire Size	BW	TD	Pneumatic	Filled	Solid
300-15	10	3/4	279.60	327.13	363.48
300-15	10	1	372.80	436.18	484.64
31-6-10	10	3/4	256.67	300.30	333.67
31-6-10	10	1	342.22	400.40	444.89
31-10-20	10	3/4	256.67	300.30	333.67
31-10-20	10	1	342.22	400.40	444.89
33-6-11	11	3/4	300.55	351.64	390.71
33-6-11	11	1	400.73	468.86	520.95
33-12-20	11	3/4	300.55	351.64	390.71
33-12-20	11	1	400.73	468.86	520.95
33x15.5x16.5	12	3/4	327.87	383.61	426.23
33x15.5x16.5	12	1	437.16	511.48	568.31
355-65-15	11	3/4	309.66	362.30	402.55
355-65-15	11	1	412.88	483.06	536.74
570-12	7	3/4	133.59	156.30	173.67
570-12	7	1	178.12	208.40	231.56
600-9	7	3/4	127.51	149.18	165.76
600-9	7	1	170.01	198.91	221.01
650-10	7	3/4	137.65	161.05	178.94
650-10	7	1	183.53	214.73	238.59
700-12	7	3/4	156.48	183.09	203.43
700-12	7	1	208.65	244.12	271.24
700-15	7	3/4	173.87	203.43	226.03
700-15	7	1	231.83	271.24	301.38
750-15	7	3/4	179.67	210.21	233.57
750-15	7	1	239.56	280.28	311.42
750-16	7	3/4	191.26	223.77	248.64
750-16	7	1	255.01	298.36	331.51
825-15	8	3/4	223.55	261.55	290.61
825-15	8	1	298.07	348.74	387.48
825-20	8	3/4	251.70	294.49	327.21
825-20	8	1	335.60	392.65	436.28
900-20	9	3/4	305.52	357.45	397.17
900-20	9	1	407.36	476.61	529.56



Slick

\*BW = Base Width \*\*TD = Tread Depth