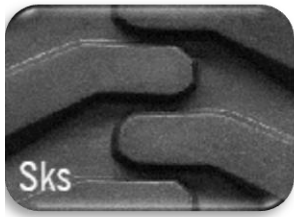
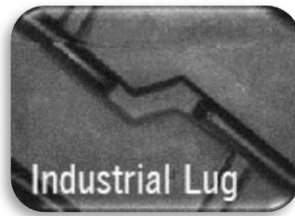


Wholesale Price Sheet



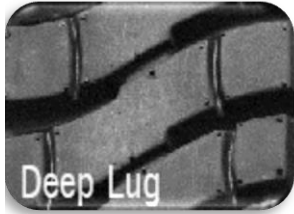
Page 2



Page 2



Page 3



Page 4



Page 5



Page 5



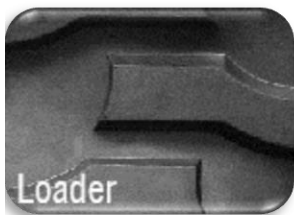
Page 6



Page 6



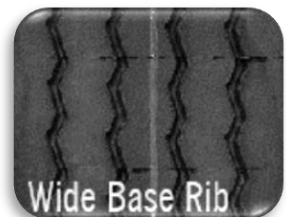
Page 6



Page 6



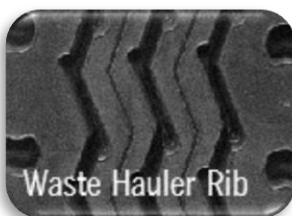
Page 7



Page 7



Page 7



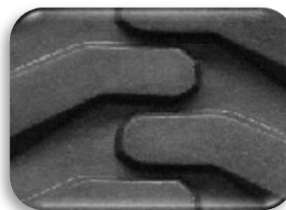
Page 8



Page 9-10

Wholesale Price Sheet

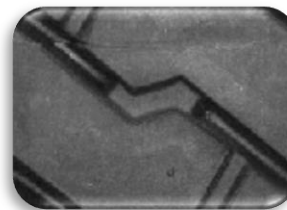
Tire Size	Tread #	Pneumatic	Filled	Solid
10.5/80-18	9	188.33	222.23	xxx
10.5-20	9	208.39	245.90	xxx
10-16.5	9	159.73	188.48	207.33
11L-15	9	184.00	217.12	xxx
11L-16	9	186.28	219.81	xxx
12.4-16	10.5	250.45	295.53	xxx
12.5/80-18	10.5	264.33	311.91	xxx
12.5-20	10.5	293.00	345.75	xxx
12-16.5	10.5	221.23	261.05	xxx
14.5/75-16.1	10.5	245.06	289.18	xxx
250-15	9	162.59	191.86	211.05
26-12-12	10.5	169.05	199.48	219.43
27-10.5-15	9	151.10	178.30	196.13
27-10-12	9	142.70	168.39	185.22
27-8.5-15	9	140.85	166.20	182.82
30-10-16	9	xxx	xxx	200.31
31-6-10	9	xxx	xxx	206.99
31-10-20	9	xxx	xxx	218.08
31.5-13-16.5	10.5	219.75	259.31	285.24
33-12-20	10.5	xxx	xxx	283.63
700-12	9	146.33	172.67	189.94
700-15	9	162.59	191.86	211.05
825-15	9	182.92	215.84	237.43



Sks

Tread #	Base Width	Tread Depth
9	8¾"	25/32
10.5	10½"	26/32

Tire Size	Tread #	Pneumatic	Filled	Solid
18-7-8	4	80.68	95.20	104.72
21-8-9	6	103.97	122.68	134.95
23-9-10	7	128.54	151.67	166.84
28-9-15	7	159.27	187.94	206.74
570-12	3	94.67	111.71	122.88
600-9	3	90.35	106.62	117.28
650-10	4	106.45	125.61	138.17
650-16	4	134.46	158.67	174.53
700-12	4	121.02	142.80	157.08
700-15	6	148.53	175.26	192.79
750-10	6	128.72	151.89	167.08
750-15	6	153.48	181.10	199.22
750-16	6	164.43	194.03	213.43
825-15	7	188.61	222.56	244.82
825-20	7	212.36	250.59	275.65

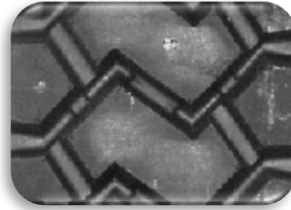


Industrial Lug

Tread #	Base Width	Tread Depth
3	5 9/16"	24/32
4	6 3/8"	24/32
6	7"	24/32
7	7 5/8"	24/32

Wholesale Price Sheet

Tire Size	Tread #	Pneumatic	Filled	Solid
1000-20	10	347.49	410.04	451.04
10-16.5	10	250.92	296.09	325.69
1100-20	12	417.35	492.47	541.72
1200-20	12	434.14	512.28	563.51
12-16.5	13	331.84	391.57	430.73
1300-24	13	504.46	595.27	654.80
1400-20	13	476.75	562.57	618.83
1400-24	13	536.15	632.66	695.92
14-17.5	13	373.36	440.56	XXX
15.5-25	16	609.97	719.76	XXX
15-19.5	13	413.29	487.68	536.44
16-22.5	16	523.28	617.47	679.22
17.5-25	16	645.16	761.29	837.42
19.5L-24	16	626.27	739.00	812.90
20.5-25	16	753.87	889.57	978.53
300-15	10	287.52	339.27	373.20
31-10-20	10	XXX	XXX	325.17
33-12-20	12	XXX	XXX	416.06
36-14-20	13	XXX	XXX	488.98
370/75-28	13	522.18	616.17	677.78
400/75-28	16	637.70	752.49	827.74

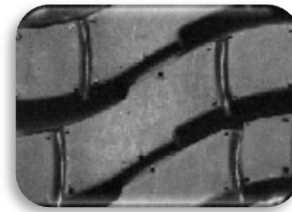


Lug Drive Trac

Tread #	Base Width	Tread Depth
10	9 5/8"	35/32
12	10 3/8"	35/32
13	12 3/4"	36/32
16	15 1/2"	32/32

Wholesale Price Sheet

Tire Size	Tread #	Pneumatic	Filled	Solid
1000-20	13	335.46	395.85	435.43
10-16.5	13	229.92	271.30	298.43
1100-20	12	356.18	420.29	462.32
1200-20	15	406.75	479.97	527.96
12-16.5	15	300.32	354.38	389.82
12.5-80-18	15	358.84	423.43	465.77
1300-24	16	585.83	691.28	760.41
1400-24	16	622.62	734.70	808.17
1400-25	16	634.16	748.31	823.14
14-17.5	16	433.58	511.62	562.78
15-19.5	16	505.66	596.67	656.34
15.5-25	16	599.79	707.75	XXX
17.5-25	17	977.81	1153.81	XXX
20.5-25	17	1084.48	1279.68	1407.65
21-8-9	6	107.16	126.44	139.09
23-10-12	9	146.85	173.28	190.61
23-9-10	8	138.03	162.87	179.16
250-15	8	170.88	201.64	221.80
27-10-12	9	162.94	192.27	211.50
27-8.5-15	7	154.04	181.77	199.95
28-12.50-15	15	265.17	312.91	344.20
28-9-15	8	162.34	191.56	210.71
30-10-16	8	180.03	212.44	233.68
300-15	15	319.82	377.39	415.13
31-6-10	13	XXX	XXX	313.92
31-10-20	13	XXX	XXX	313.92
33-6-11	15	XXX	XXX	405.66
33-12-20	15	XXX	XXX	405.66
33x15.5x16.5	16	401.02	473.21	520.53
355-65-15	15	305.62	360.64	396.70
570-12	6	114.88	135.56	149.12
600-9	6	109.65	129.38	142.32
650-10	6	118.37	139.68	153.64
700-12	6	134.57	158.79	174.67
700-15	6	149.52	176.43	194.08
750-15	7	165.54	195.34	214.87
750-16	6	173.28	204.47	224.92
825-15	8	192.24	226.84	249.53
825-20	8	216.45	255.41	280.95
900-20	9	240.83	284.18	312.60

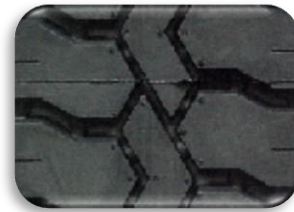


Deep Lug

Tread #	Base Width	Tread Depth
6	7"	28/32
7	7 5/8"	28/32
8	7 15/16"	28/32
9	8½"	28/32
12	9 ¼"	35/32
13	9 5/8"	32/32
15	11"	32/32
16	12½"	40/32
17	16¾"	40/32

Wholesale Price Sheet

Tire Size	Tread #	Pneumatic	Filled	Solid
1000-20	9	209.66	247.40	272.14
1200-20	9	220.63	260.35	286.38
18-7-8	5	68.57	80.91	89.00
200-50-10	6	70.89	83.65	92.01
21-8-9	6	84.67	99.91	109.90
23-10-12	9	121.90	143.84	158.22
23-7.5-12	7	95.76	113.00	124.30
23-9-10	9	112.15	132.33	145.57
24-9-15	9	138.96	163.98	180.37
250-15	9	146.28	172.61	189.87
27-10-12	9	135.31	159.66	175.63
28-9-15	8	128.27	151.36	166.50
400-8	1	37.38	44.11	48.52
500-8	3	52.74	62.24	68.46
570-12	1	51.44	60.70	66.77
600-9	1	49.10	57.93	63.73
650-10	5	86.85	102.49	112.73
700-12	5	98.74	116.51	128.16
700-15	6	118.15	139.41	153.35
750-10	6	102.39	120.83	132.91
750-15	7	127.90	150.92	166.01
750-16	7	134.09	158.22	174.05
825-15	8	151.90	179.25	197.17
825-20	8	171.03	201.82	222.00
900-20	9	199.91	235.90	259.49



Crossbar

Tread #	Base Width	Tread Depth
1	5 1/16"	14/32
5	6 7/16"	17/32
6	7"	18/32
7	7 9/16"	19/32
8	8"	18/32
9	8 5/8"	20/32

Tire Size	Tread #	Pneumatic	Filled	Solid
23-9-10	7	xxx	221.80	243.98
28-9-15	7	xxx	277.50	305.25
600-9	4	xxx	161.14	177.26
650-10	4	xxx	165.12	181.63
700-12	4	xxx	187.71	206.48
750-10	4	xxx	180.76	198.84
750-15	7	xxx	301.84	332.03
825-15	7	xxx	328.62	361.48



Power Trac

Tread #	Base Width	Tread Depth
4	6 3/8"	36/32
7	7 5/8"	36/32

Wholesale Price Sheet

Tire Size	Tread #	Pneumatic	Filled	Solid
12.5-80-18	12	318.17	375.44	xxx
1300-24	12	384.22	453.39	xxx
14.5-20	12	352.68	416.17	xxx
14.9-24	12	401.30	473.54	xxx
1400-20	12	382.57	451.43	xxx
1400-24	12	408.36	481.86	xxx
15-19.5	12	331.64	391.34	xxx
15.5-25	12	414.45	489.05	xxx
33-15.5-16.5	12	263.18	310.55	xxx
36-14-20	12	286.93	338.58	xxx



Grader (G-2)

Tread #	Base Width	Tread Depth
12	12"	31/32

Tire Size	Tread #	Pneumatic	Filled	Solid
1300-24	12	387.66	457.44	xxx
14.5-20	12	337.75	398.54	xxx
14.9-24	13	415.47	490.25	xxx
1400-24	13	445.42	525.59	xxx
14-17.5	12	286.91	338.56	xxx
15-19.5	13	343.35	405.15	xxx
15.5-25	13	429.08	506.31	xxx
16.9-24	12	405.98	479.06	xxx
16.9-28	13	471.74	556.65	xxx
33-15.5-16.5	13	272.47	321.51	xxx



Non Directional Grader

Tread #	Base Width	Tread Depth
12	11 15/16"	32/32
13	12 3/4"	32/32

Tire Size	Tread #	Pneumatic	Filled	Solid
14.9-24	18	516.23	609.15	xxx
15.5-25	18	533.14	629.11	xxx
15-625	18	453.68	535.35	xxx
16.5/80-24	18	586.87	692.51	xxx
16.9-24	18	574.56	677.98	xxx
16.9-28	18	617.55	728.71	xxx
17.5/65-20	18	464.49	548.09	xxx
17.5-25	18	563.90	665.40	xxx



Backhoe

Tread #	Base Width	Tread Depth
18	14 5/8"	35/32

Tire Size	Tread #	Pneumatic	Filled	Solid
16.9-24	19	504.63	595.47	xxx
16.9-28	19	542.39	640.02	xxx
17.5-25	19	549.76	648.72	xxx
17.5L-24	19	477.31	563.23	xxx
18.4-28	19	590.34	696.60	xxx
19.5L-24	19	506.53	597.71	xxx
20.5-25	19	609.73	719.48	xxx
21L-24	19	531.86	627.60	xxx
400-75-28	19	489.55	577.67	xxx

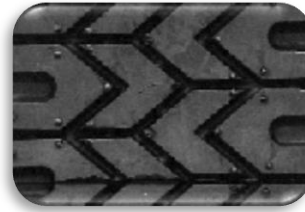


Loader

Tread #	Base Width	Tread Depth
19	16 3/4"	35/32

Wholesale Price Sheet

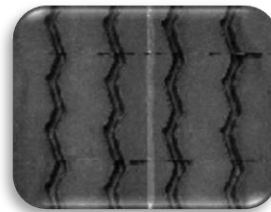
Tire Size	Tread #	Pneumatic	Filled	Solid
40-19-19.5	7 (x2)	291.92	344.46	xxx



SuperGrip

Tread #	Base Width	Tread Depth
7	7 5/16"	17/32

Tire Size	Tread #	Pneumatic	Filled	Solid
33-16-17.5	11	231.57	273.25	xxx
33-16-17.5	13	243.05	286.79	xxx



Wide Base Rib

Tread #	Base Width	Tread Depth
11	11 1/4"	16/32
13	13 1/8"	16/32

Tire Size	Tread #	Pneumatic	Filled	Solid
1100-20	12	322.11	380.09	418.10
1200-20	14	349.56	412.49	453.73
17.5/65-20	14	349.98	412.97	454.27
18-19.5	14	360.40	425.27	467.79
31-15.5-15	14	252.31	297.73	327.50
355-65-15	14	262.66	309.93	340.93
425/65R-22.5	14	360.40	425.27	467.79

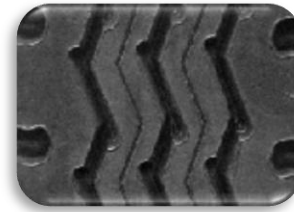


Wide Base Lug

Tread #	Base Width	Tread Depth
12	12 1/8"	21/32
14	13 1/2"	21/32

Wholesale Price Sheet

Tire Size	Tread #	Pneumatic	Filled	Solid
1000-20	8	265.39	313.16	344.48
1000-22	8	278.18	328.25	361.08
10-16.5	9	207.88	245.30	XXX
10-17.5	7	165.29	195.04	XXX
10-22.5	8	256.44	302.60	XXX
1100-20	9	291.23	343.65	378.02
1100-22	9	296.59	349.97	384.97
11-17.5	8	232.14	273.92	XXX
11-22.5	8	265.39	313.16	XXX
11-24.5	9	291.23	343.65	XXX
11L-15 SL	10.5	236.21	278.73	XXX
11L-16 SL	10.5	239.13	282.17	XXX
12.5-80-18	11.5	315.93	372.79	XXX
1200-20	11	345.60	407.81	448.59
12-16.5	11.5	264.41	312.00	XXX
12-22.5	9	285.88	337.33	XXX
1300-24	12	418.14	493.41	XXX
14.5-19.5	12	321.49	379.36	XXX
1400-20	12	395.17	466.31	512.94
1400-24	13	473.76	559.04	614.94
14-17.5	12	309.47	365.18	XXX
15.5-25	14	484.67	571.91	XXX
15-19.5	13	365.20	430.93	XXX
15-22.5	13	381.08	449.68	XXX
17.5-25	14	512.63	604.90	XXX
23-8.5-12	7	110.56	130.46	XXX
26-12-12	11.5	202.04	238.41	XXX
26-12-16.5	11.5	205.76	242.80	XXX
27-10-12	8	177.40	209.33	230.26
27-8.5-15	7	130.42	153.90	XXX
29-12.5-15	11.5	229.51	270.82	XXX
31.5-13-16.5	11.5	249.45	294.35	XXX
31-10.5-15	9	207.55	244.90	XXX
31-15.5-15	13	272.51	321.57	XXX
320-80-18	11	296.46	349.82	XXX
33-15.5-16.5	13	289.80	341.97	XXX
380-65-19.5	12	321.49	379.36	XXX
385-65-22.5	13	381.08	449.68	XXX
825-20	7	182.91	215.84	237.42
900-20	8	256.44	302.60	332.86
9-22.5	7	182.91	215.84	237.42



Waste Hauler Rib

Tread #	Base Width	Tread Depth
7	7 11/16"	25/32
8	8"	26/32
9	8 5/8"	26/32
10.5	9 3/8"	25/32
11	10"	26/32
11.5	10½"	26/32
12	11 7/8"	20/32
13	12¾"	20/32
14	13¼"	20/32

Wholesale Price Sheet

Tire Size	BW*	TD**	Pneumatic	Filled	Solid
1000-20	9	¾	299.66	350.60	389.56
1000-20	9	1	399.54	467.47	519.41
1000-20	10	¾	332.95	389.56	432.84
1000-20	10	1	443.94	519.41	577.12
10-16.5	10	¾	240.42	281.30	312.55
10-16.5	10	1	320.56	375.06	416.73
1100-20	10	¾	336.83	394.09	437.87
1100-20	10	1	449.10	525.45	583.83
1200-20	11	¾	385.41	450.93	501.04
1200-20	11	1	513.88	601.24	668.05
12-16.5	11	¾	284.57	332.94	369.94
12-16.5	11	1	379.42	443.92	493.25
12-5-80-18	10	¾	309.10	361.65	401.84
12-5-80-18	10	1	412.14	482.20	535.78
1300-24	12	¾	471.93	552.15	613.50
1300-24	12	1	629.24	736.21	818.01
1400-24	12	¾	501.57	586.83	652.04
1400-24	12	1	668.76	782.45	869.38
1400-25	12	¾	510.86	597.71	664.12
1400-25	12	1	681.15	796.94	885.49
14-17.5	12	¾	349.28	408.65	454.06
14-17.5	12	1	465.70	544.87	605.41
15-19.5	12	¾	386.63	452.36	502.62
15-19.5	12	1	515.50	603.14	670.16
15.5-25	12	¾	483.17	565.31	628.12
15.5-25	12	1	644.23	753.74	837.49
17.5-25	12	¾	511.04	597.92	664.36
17.5-25	12	1	681.39	797.23	885.81
20.5-25	16	¾	755.73	884.20	982.45
20.5-25	16	1	1007.64	1178.93	1309.93
21-8-9	8	¾	133.18	155.82	173.14
21-8-9	8	1	177.58	207.76	230.85
23-10-12	9	¾	174.22	203.84	226.49
23-10-12	9	1	232.29	271.78	301.98
23-9-10	8	¾	142.47	166.69	185.22
23-9-10	8	1	189.96	222.26	246.95
250-15	9	¾	209.06	244.60	271.78
250-15	9	1	278.75	326.14	362.38
27-10-12	9	¾	193.31	226.18	251.31
27-10-12	9	1	257.75	301.57	335.08
27-8.5-15	8	¾	169.60	198.44	220.49
27-8.5-15	8	1	226.14	264.58	293.98
28-12.50-15	11	¾	251.26	293.98	326.64
28-12.50-15	11	1	335.02	391.97	435.52
28-9-15	8	¾	176.54	206.56	229.51
28-9-15	8	1	235.39	275.41	306.01



Slick

*BW = Base Width **TD = Tread Depth

Wholesale Price Sheet

Tire Size	BW	TD	Pneumatic	Filled	Solid
300-15	10	3/4	261.48	305.94	339.93
300-15	10	1	348.65	407.92	453.24
31-6-10	10	3/4	240.04	280.84	312.05
31-6-10	10	1	320.05	374.46	416.06
31-10-20	10	3/4	240.04	280.84	312.05
31-10-20	10	1	320.05	374.46	416.06
33-6-11	11	3/4	281.07	328.86	365.40
33-6-11	11	1	374.77	438.48	487.20
33-12-20	11	3/4	281.07	328.86	365.40
33-12-20	11	1	374.77	438.48	487.20
33x15.5x16.5	12	3/4	306.63	358.75	398.61
33x15.5x16.5	12	1	408.84	478.34	531.49
355-65-15	11	3/4	289.59	338.82	376.47
355-65-15	11	1	386.12	451.76	501.96
570-12	7	3/4	124.93	146.17	162.42
570-12	7	1	166.58	194.90	216.55
600-9	7	3/4	119.24	139.52	155.02
600-9	7	1	158.99	186.02	206.69
650-10	7	3/4	128.73	150.61	167.35
650-10	7	1	171.64	200.82	223.13
700-12	7	3/4	146.34	171.22	190.25
700-12	7	1	195.13	228.30	253.66
700-15	7	3/4	162.61	190.25	211.39
700-15	7	1	216.81	253.66	281.85
750-15	7	3/4	168.03	196.59	218.43
750-15	7	1	224.03	262.12	291.24
750-16	7	3/4	178.87	209.27	232.53
750-16	7	1	238.49	279.03	310.03
825-15	8	3/4	209.06	244.60	271.78
825-15	8	1	278.75	326.14	362.38
825-20	8	3/4	235.39	275.41	306.01
825-20	8	1	313.85	367.21	408.01
900-20	9	3/4	285.72	334.29	371.44
900-20	9	1	380.96	445.72	495.25



Slick

*BW = Base Width **TD = Tread Depth