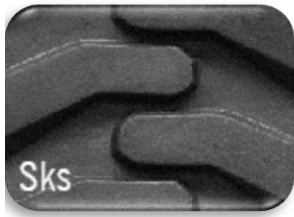
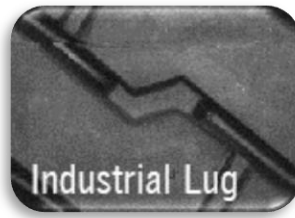


Dealer Price Sheet



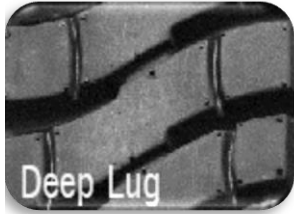
Page 2



Page 2



Page 3



Page 4



Page 5



Page 5



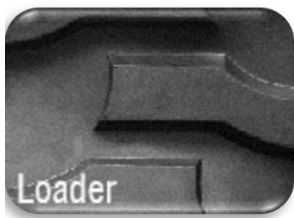
Page 6



Page 6



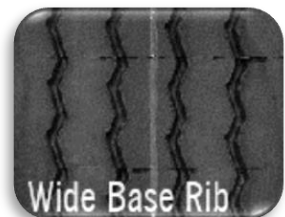
Page 6



Page 6



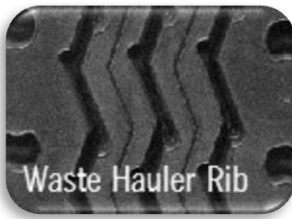
Page 7



Page 7



Page 7



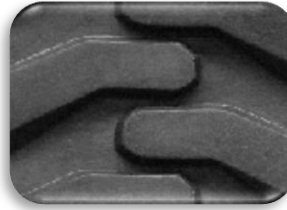
Page 8



Page 9-10

Dealer Price Sheet

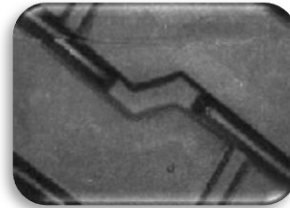
Tire Size	Tread #	Pneumatic	Filled	Solid
10.5/80-18	9	228.68	269.85	xxx
10.5-20	9	253.04	298.59	xxx
10-16.5	9	193.95	228.87	251.75
11L-15	9	223.43	263.65	xxx
11L-16	9	226.19	266.91	xxx
12.4-16	10.5	304.12	358.86	xxx
12.5/80-18	10.5	320.98	378.75	xxx
12.5-20	10.5	355.79	419.83	xxx
12-16.5	10.5	268.63	316.99	xxx
14.5/75-16.1	10.5	297.58	351.14	xxx
250-15	9	197.43	232.97	256.27
26-12-12	10.5	205.27	242.22	266.45
27-10.5-15	9	183.48	216.51	238.16
27-10-12	9	173.28	204.47	224.91
27-8.5-15	9	171.03	201.81	222.00
30-10-16	9	xxx	xxx	243.24
31-6-10	9	xxx	xxx	251.35
31-10-20	9	xxx	xxx	264.81
31.5-13-16.5	10.5	266.84	314.88	346.36
33-12-20	10.5	xxx	xxx	344.41
700-12	9	177.69	209.68	230.64
700-15	9	197.43	232.97	256.27
825-15	9	222.11	262.09	288.30



Sks

Tread #	Base Width	Tread Depth
9	8¾"	25/32
10.5	10½"	26/32

Tire Size	Tread #	Pneumatic	Filled	Solid
18-7-8	4	97.97	115.60	127.16
21-8-9	6	126.25	148.97	163.87
23-9-10	7	156.08	184.17	202.59
28-9-15	7	193.40	228.22	251.04
570-12	3	114.95	135.64	149.21
600-9	3	109.72	129.46	142.41
650-10	4	129.26	152.53	167.78
650-16	4	163.28	192.67	211.93
700-12	4	146.95	173.40	190.74
700-15	6	180.36	212.82	234.10
750-10	6	156.31	184.44	202.89
750-15	6	186.37	219.91	241.90
750-16	6	199.67	235.61	259.17
825-15	7	229.03	270.26	297.28
825-20	7	257.87	304.29	334.72

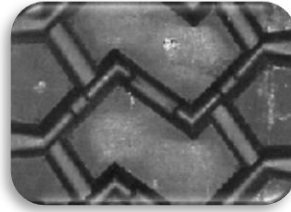


Industrial Lug

Tread #	Base Width	Tread Depth
3	5 9/16"	24/32
4	6 3/8"	24/32
6	7"	24/32
7	7 5/8"	24/32

Dealer Price Sheet

Tire Size	Tread #	Pneumatic	Filled	Solid
1000-20	10	421.95	497.90	547.69
10-16.5	10	304.69	359.53	395.49
1100-20	12	506.78	598.00	657.80
1200-20	12	527.17	622.05	684.26
12-16.5	13	402.95	475.48	523.03
1300-24	13	612.56	722.83	795.11
1400-20	13	578.91	683.12	751.43
1400-24	13	651.04	768.22	845.05
14-17.5	13	453.36	534.97	XXX
15.5-25	16	740.68	874.00	XXX
15-19.5	13	501.85	592.18	651.40
16-22.5	16	635.41	749.79	824.77
17.5-25	16	783.41	924.42	1016.86
19.5L-24	16	760.47	897.36	987.10
20.5-25	16	915.42	1080.19	1188.21
300-15	10	349.13	411.98	453.17
31-10-20	10	XXX	XXX	394.85
33-12-20	12	XXX	XXX	505.22
36-14-20	13	XXX	XXX	593.77
370/75-28	13	634.07	748.20	823.02
400/75-28	16	774.35	913.74	1005.11

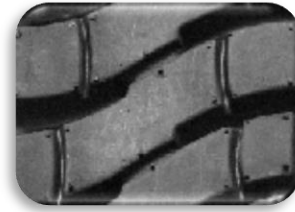


Lug Drive Trac

Tread #	Base Width	Tread Depth
10	9 5/8"	35/32
12	10 3/8"	35/32
13	12 3/4"	36/32
16	15 1/2"	32/32

Dealer Price Sheet

Tire Size	Tread #	Pneumatic	Filled	Solid
1000-20	13	407.35	480.67	528.74
10-16.5	13	279.19	329.44	362.38
1100-20	12	432.50	510.35	561.39
1200-20	15	493.91	582.82	641.10
12-16.5	15	364.68	430.32	473.35
12.5-80-18	15	435.73	514.17	565.58
1300-24	16	711.37	839.41	923.35
1400-24	16	756.04	892.13	981.35
1400-25	16	770.05	908.66	999.53
14-17.5	16	526.49	621.25	683.38
15-19.5	16	614.01	724.53	796.99
15.5-25	16	728.31	859.41	XXX
17.5-25	17	1187.34	1401.06	XXX
20.5-25	17	1316.87	1553.90	1709.29
21-8-9	6	130.12	153.54	168.89
23-10-12	9	178.32	210.41	231.46
23-9-10	8	167.60	197.77	217.55
250-15	8	207.50	244.85	269.33
27-10-12	9	197.86	233.48	256.82
27-8.5-15	7	187.05	220.72	242.79
28-12.50-15	15	322.00	379.96	417.95
28-9-15	8	197.12	232.60	255.86
30-10-16	8	218.61	257.96	283.76
300-15	15	388.35	458.26	504.08
31-6-10	13	XXX	XXX	381.18
31-10-20	13	XXX	XXX	381.18
33-6-11	15	XXX	XXX	492.59
33-12-20	15	XXX	XXX	492.59
33x15.5x16.5	16	486.96	574.61	632.07
355-65-15	15	371.12	437.92	481.71
570-12	6	139.50	164.61	181.07
600-9	6	133.14	157.11	172.82
650-10	6	143.73	169.61	186.57
700-12	6	163.40	192.82	212.10
700-15	6	181.56	214.24	235.66
750-15	7	201.01	237.19	260.91
750-16	6	210.41	248.29	273.12
825-15	8	233.43	275.45	303.00
825-20	8	262.83	310.14	341.15
900-20	9	292.44	345.08	379.59



Deep Lug

Tread #	Base Width	Tread Depth
6	7"	28/32
7	7 5/8"	28/32
8	7 15/16"	28/32
9	8½"	28/32
12	9 ¼"	35/32
13	9 5/8"	32/32
15	11"	32/32
16	12½"	40/32
17	16¾"	40/32

Dealer Price Sheet

Tire Size	Tread #	Pneumatic	Filled	Solid
1000-20	9	254.59	300.42	330.46
1200-20	9	267.91	316.14	347.75
18-7-8	5	83.26	98.25	108.07
200-50-10	6	86.08	101.57	111.73
21-8-9	6	102.82	121.32	133.46
23-10-12	9	148.02	174.66	192.13
23-7.5-12	7	116.28	137.21	150.93
23-9-10	9	136.18	160.69	176.76
24-9-15	9	168.74	199.11	219.03
250-15	9	177.62	209.59	230.55
27-10-12	9	164.30	193.87	213.26
28-9-15	8	155.76	183.80	202.18
400-8	1	45.39	53.56	58.92
500-8	3	64.05	75.57	83.13
570-12	1	62.46	73.71	81.08
600-9	1	59.62	70.35	77.38
650-10	5	105.46	124.45	136.89
700-12	5	119.90	141.48	155.62
700-15	6	143.46	169.29	186.22
750-10	6	124.34	146.72	161.39
750-15	7	155.31	183.26	201.59
750-16	7	162.82	192.13	211.34
825-15	8	184.45	217.66	239.42
825-20	8	207.68	245.06	269.57
900-20	9	242.75	286.45	315.09



Crossbar

Tread #	Base Width	Tread Depth
1	5 1/16"	14/32
5	6 7/16"	17/32
6	7"	18/32
7	7 9/16"	19/32
8	8"	18/32
9	8 5/8"	20/32

Tire Size	Tread #	Pneumatic	Filled	Solid
23-9-10	7	xxx	269.33	296.26
28-9-15	7	xxx	336.96	370.66
600-9	4	xxx	195.68	215.24
650-10	4	xxx	200.50	220.55
700-12	4	xxx	227.94	250.73
750-10	4	xxx	219.49	241.44
750-15	7	xxx	366.52	403.17
825-15	7	xxx	399.04	438.94



Power Trac

Tread #	Base Width	Tread Depth
4	6 3/8"	36/32
7	7 5/8"	36/32

Dealer Price Sheet

Tire Size	Tread #	Pneumatic	Filled	Solid
12.5-80-18	12	386.35	455.89	xxx
1300-24	12	466.56	550.54	xxx
14.5-20	12	428.26	505.34	xxx
14.9-24	12	487.29	575.01	xxx
1400-20	12	464.55	548.17	xxx
1400-24	12	495.86	585.12	xxx
15-19.5	12	402.71	475.20	xxx
15.5-25	12	503.26	593.85	xxx
33-15.5-16.5	12	319.57	377.10	xxx
36-14-20	12	348.41	411.13	xxx



Grader (G-2)

Tread #	Base Width	Tread Depth
12	12"	31/32

Tire Size	Tread #	Pneumatic	Filled	Solid
1300-24	12	470.73	555.47	xxx
14.5-20	12	410.12	483.94	xxx
14.9-24	13	504.49	595.30	xxx
1400-24	13	540.86	638.22	xxx
14-17.5	12	348.39	411.10	xxx
15-19.5	13	416.92	491.97	xxx
15.5-25	13	521.03	614.81	xxx
16.9-24	12	492.98	581.71	xxx
16.9-28	13	572.83	675.94	xxx
33-15.5-16.5	13	330.85	390.40	xxx



Non Directional Grader

Tread #	Base Width	Tread Depth
12	11 15/16"	32/32
13	12 ³ / ₄ "	32/32

Tire Size	Tread #	Pneumatic	Filled	Solid
14.9-24	18	626.85	739.68	xxx
15.5-25	18	647.39	763.92	xxx
15-625	18	550.90	650.07	xxx
16.5/80-24	18	712.63	840.91	xxx
16.9-24	18	697.68	823.26	xxx
16.9-28	18	749.88	884.86	xxx
17.5/65-20	18	564.02	665.54	xxx
17.5-25	18	684.74	807.99	xxx



Backhoe

Tread #	Base Width	Tread Depth
18	14 5/8"	35/32

Tire Size	Tread #	Pneumatic	Filled	Solid
16.9-24	19	612.77	723.07	xxx
16.9-28	19	658.62	777.17	xxx
17.5-25	19	667.56	787.73	xxx
17.5L-24	19	579.59	683.92	xxx
18.4-28	19	716.84	845.87	xxx
19.5L-24	19	615.07	725.79	xxx
20.5-25	19	740.39	873.66	xxx
21L-24	19	645.83	762.08	xxx
400-75-28	19	594.45	701.45	xxx



Loader

Tread #	Base Width	Tread Depth
19	16 ³ / ₄ "	35/32

Dealer Price Sheet

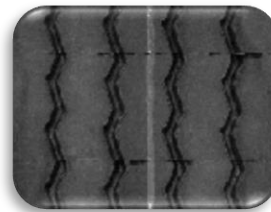
Tire Size	Tread #	Pneumatic	Filled	Solid
40-19-19.5	7 (x2)	354.47	418.28	xxx



SuperGrip

Tread #	Base Width	Tread Depth
7	7 5/16"	17/32

Tire Size	Tread #	Pneumatic	Filled	Solid
33-16-17.5	11	281.19	331.80	xxx
33-16-17.5	13	295.13	348.25	xxx



Wide Base Rib

Tread #	Base Width	Tread Depth
11	11 1/4"	16/32
13	13 1/8"	16/32

Tire Size	Tread #	Pneumatic	Filled	Solid
1100-20	12	391.13	461.53	507.69
1200-20	14	424.47	500.88	550.96
17.5/65-20	14	424.97	501.47	551.62
18-19.5	14	437.62	516.40	568.04
31-15.5-15	14	306.38	361.52	397.68
355-65-15	14	318.94	376.35	413.98
425/65R-22.5	14	437.62	516.40	568.04

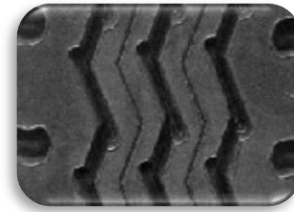


Wide Base Lug

Tread #	Base Width	Tread Depth
12	12 1/8"	21/32
14	13 1/2"	21/32

Dealer Price Sheet

Tire Size	Tread #	Pneumatic	Filled	Solid
1000-20	8	322.26	380.27	418.29
1000-22	8	337.79	398.59	438.45
10-16.5	9	252.43	297.86	XXX
10-17.5	7	200.71	236.84	XXX
10-22.5	8	311.39	367.44	XXX
1100-20	9	353.64	417.29	459.02
1100-22	9	360.14	424.97	467.47
11-17.5	8	281.88	332.62	XXX
11-22.5	8	322.26	380.27	XXX
11-24.5	9	353.64	417.29	XXX
11L-15 SL	10.5	286.82	338.45	XXX
11L-16 SL	10.5	290.37	342.64	XXX
12.5-80-18	11.5	383.62	452.68	XXX
1200-20	11	419.66	495.20	544.72
12-16.5	11.5	321.06	378.86	XXX
12-22.5	9	347.14	409.62	XXX
1300-24	12	507.75	599.14	XXX
14.5-19.5	12	390.38	460.65	XXX
1400-20	12	479.85	566.23	622.85
1400-24	13	575.28	678.83	746.72
14-17.5	12	375.79	443.43	XXX
15.5-25	14	588.52	694.46	XXX
15-19.5	13	443.45	523.27	XXX
15-22.5	13	462.74	546.04	XXX
17.5-25	14	622.48	734.52	XXX
23-8.5-12	7	134.25	158.41	XXX
26-12-12	11.5	245.34	289.50	XXX
26-12-16.5	11.5	249.86	294.83	XXX
27-10-12	8	215.41	254.18	279.60
27-8.5-15	7	158.37	186.88	XXX
29-12.5-15	11.5	278.69	328.85	XXX
31.5-13-16.5	11.5	302.90	357.42	XXX
31-10.5-15	9	252.02	297.38	XXX
31-15.5-15	13	330.91	390.47	XXX
320-80-18	11	359.98	424.78	XXX
33-15.5-16.5	13	351.91	415.25	XXX
380-65-19.5	12	390.38	460.65	XXX
385-65-22.5	13	462.74	546.04	XXX
825-20	7	222.11	262.09	288.30
900-20	8	311.39	367.44	404.18
9-22.5	7	222.11	262.09	288.30



Waste Hauler Rib

Tread #	Base Width	Tread Depth
7	7 11/16"	25/32
8	8"	26/32
9	8 5/8"	26/32
10.5	9 3/8"	25/32
11	10"	26/32
11.5	10½"	26/32
12	11 7/8"	20/32
13	12¾"	20/32
14	13¼"	20/32

Dealer Price Sheet

Tire Size	BW*	TD**	Pneumatic	Filled	Solid
1000-20	9	¾	363.87	425.73	473.03
1000-20	9	1	485.16	567.64	630.71
1000-20	10	¾	404.30	473.03	525.59
1000-20	10	1	539.07	630.71	700.79
10-16.5	10	¾	291.94	341.57	379.53
10-16.5	10	1	389.26	455.43	506.03
1100-20	10	¾	409.00	478.53	531.70
1100-20	10	1	545.34	638.04	708.94
1200-20	11	¾	468.00	547.56	608.40
1200-20	11	1	624.00	730.08	811.20
12-16.5	11	¾	345.55	404.29	449.21
12-16.5	11	1	460.73	539.05	598.95
12-5-80-18	10	¾	375.34	439.15	487.94
12-5-80-18	10	1	500.46	585.53	650.59
1300-24	12	¾	573.05	670.47	744.97
1300-24	12	1	764.07	893.96	993.29
1400-24	12	¾	609.05	712.58	791.76
1400-24	12	1	812.06	950.11	1055.68
1400-25	12	¾	620.33	725.78	806.43
1400-25	12	1	827.11	967.71	1075.24
14-17.5	12	¾	424.12	496.22	551.36
14-17.5	12	1	565.49	661.63	735.14
15-19.5	12	¾	469.48	549.29	610.32
15-19.5	12	1	625.97	732.39	813.76
15.5-25	12	¾	586.71	686.45	762.72
15.5-25	12	1	782.27	915.26	1016.96
17.5-25	12	¾	620.55	726.05	806.72
17.5-25	12	1	827.41	968.06	1075.63
20.5-25	16	¾	917.67	1073.67	1192.97
20.5-25	16	1	1223.56	1431.56	1590.63
21-8-9	8	¾	161.72	189.21	210.24
21-8-9	8	1	215.63	252.28	280.32
23-10-12	9	¾	211.55	247.52	275.02
23-10-12	9	1	282.07	330.02	366.69
23-9-10	8	¾	173.00	202.41	224.90
23-9-10	8	1	230.67	269.88	299.87
250-15	9	¾	253.86	297.02	330.02
250-15	9	1	338.48	396.03	440.03
27-10-12	9	¾	234.74	274.64	305.16
27-10-12	9	1	312.99	366.19	406.88
27-8.5-15	8	¾	205.95	240.96	267.73
27-8.5-15	8	1	274.60	321.28	356.98
28-12.50-15	11	¾	305.11	356.97	396.64
28-12.50-15	11	1	406.81	475.97	528.85
28-9-15	8	¾	214.37	250.82	278.69
28-9-15	8	1	285.83	334.42	371.58



Slick

*BW = Base Width **TD = Tread Depth

Dealer Price Sheet

Tire Size	BW	TD	Pneumatic	Filled	Solid
300-15	10	¾	317.52	371.49	412.77
300-15	10	1	423.36	495.33	550.36
31-6-10	10	¾	291.47	341.02	378.91
31-6-10	10	1	388.63	454.70	505.22
31-10-20	10	¾	291.47	341.02	378.91
31-10-20	10	1	388.63	454.70	505.22
33-6-11	11	¾	341.30	399.33	443.70
33-6-11	11	1	455.07	532.44	591.60
33-12-20	11	¾	341.30	399.33	443.70
33-12-20	11	1	455.07	532.44	591.60
33x15.5x16.5	12	¾	372.33	435.63	484.03
33x15.5x16.5	12	1	496.44	580.84	645.38
355-65-15	11	¾	351.65	411.43	457.14
355-65-15	11	1	468.86	548.57	609.52
570-12	7	¾	151.71	177.50	197.22
570-12	7	1	202.28	236.66	262.96
600-9	7	¾	144.80	169.41	188.23
600-9	7	1	193.06	225.88	250.98
650-10	7	¾	156.31	182.89	203.21
650-10	7	1	208.42	243.85	270.94
700-12	7	¾	177.70	207.91	231.02
700-12	7	1	236.94	277.22	308.02
700-15	7	¾	197.45	231.02	256.68
700-15	7	1	263.27	308.02	342.25
750-15	7	¾	204.03	238.72	265.24
750-15	7	1	272.04	318.29	353.65
750-16	7	¾	217.19	254.12	282.35
750-16	7	1	289.59	338.82	376.47
825-15	8	¾	253.86	297.02	330.02
825-15	8	1	338.48	396.03	440.03
825-20	8	¾	285.83	334.42	371.58
825-20	8	1	381.11	445.90	495.44
900-20	9	¾	346.95	405.93	451.03
900-20	9	1	462.60	541.24	601.37



Slick

*BW = Base Width **TD = Tread Depth